

Orthopedic Imaging Update: Upper Extremity
Including MR Imaging and Ultrasonography
MSK 2025

AFRICAN SAFARI



Shamwari Private Game Reserve, South Africa

October 4 - 12, 2025

Dr. Jon Jacobson
Dr. Andrew Grainger

Delegates: 30 + partners
CME Credits: Up to a maximum of
20 category 1 CME Credits
Arrive Cape Town: Oct 4, 2025
One & Only 5 Star Hotel x 3 Nights: Oct 4-7, 2025
**Tours // Vineyards included
Shamwari Safari x 5 nights: Oct 7-12, 2025



Exclusive Property Booking // Family Members Welcome // Limited to 60 people

Contact: jay@bhconferencing.com



African Safari CME Conference Pricing & Terms

Safari Conference Pricing:

***PLEASE NOTE:** International flights are not in date range at this time so prices exclude flights from the United States to Cape Town.

We will have a dedicated travel agent booking and managing group flights and will have pricing to you once airlines are in date range. Approximate cost for Business Class air is \$6,000 per person.

This is an all inclusive package and includes;

The One & Only Hotel, Cape Town + Shamwari Private Game Reserve Booking:

**Room options and price ranges - please see below and at bottom of event page.*

***TOTAL PKG Per Person approx. pricing from US\$8,500pp - US\$10,500pp for 8 nights, 9 Days.**

****PLEASE NOTE**** Round trip flights from Cape Town to Port Elizabeth are included and may be subject to slight pricing changes as flights come in to date range approx. 12 months from the time of event.

Itinerary: Included	Exclusive Lodge Booking for Orthopedic CME Conference.
October 3, 2025	Inclusions for Delegates
October 4 - 7, 2025 <i>*3 x Nights</i>	Depart the United States - Flight options available via dedicated travel agent.
October 7, 2025	Arrive Cape Town <ul style="list-style-type: none">- VIP Transfer Service to The One & Only 5 Star Hotel- The One & Only Hotel - Mountain View Room w/view, 63sqm with breakfast included. https://www.oneandonlyresorts.com/cape-town/accommodation/marina-table-mountain-room <ul style="list-style-type: none">- Morning lectures: 3hrs per day.- Cape Town Tours including Vineyard day and other activities.
October 7 - 12, 2025	Depart Cape Town for Port Elizabeth <ul style="list-style-type: none">- VIP Transfer Service to Cape Town Airport and pick up from PE to Shamwari.- Flights. <i>*Subject to change when prices are released.</i>
October 12, 2025	Arrive Shamwari Game Reserve <ul style="list-style-type: none">- 2 x Game Drives daily- CME Meetings - 2hrs per day after morning safari drive.- All meals- All beverages including a top quality wine list.- Laundry Service (small fee)- WIFI- Well stocked minibar included https://www.shamwari.com/#lodges
	Additional Options Available <ul style="list-style-type: none">- Extra nights in Cape Town- Add on activities i.e. Victoria Falls or other <i>*Delegates can discuss w/Jay</i>

Conference & Safari booking/admin fee: US\$275 per person. **Refunded within 48hrs if Rooms are all already sold out.*

What is this for?

All attending Delegates, plus those individuals coming along as partners/traveling companions are required to pay this \$275 fee. This fee holds your spot, and engages Blue Horizon Conferencing to manage and confirm your booking. **(non-refundable fee)*

Contact: Jay Duncanson
+1 302 766 7647 | +351 912 991 460
jay@bhconferencing.com



Your Adventure Conference Specialists

bluehorizonconferencing.com

Orthopedic CME Conference Fee: US\$1,500 per Delegate

What is this for?

Delegates participating in/attending the content scheduled for the CME Conference - the talks, lectures & breakout sessions - are required to pay this US\$1,500 fee.

***PLEASE NOTE:**

**** Partners/traveling companions of Delegates (those sharing a room with a Delegate) are NOT required to pay this fee.**

**** If a 2nd room is booked for non-Delegate attendees (additional family and/or friends you want to book for), 1x Registration Fee of \$1,500 applies to that room. (A minimum of 1 x Reg Fee per room is required).**

Cancellation Policy:

Cancellations received 180 days or more prior to event, are refundable less an administrative fee of US\$1,250 per room. If cancellation is received between 180 days and 90 days, the deposit is forfeited.

If cancellation occurs less than 90 days prior to departure, all payments are forfeited unless we find another to replace the booking, then a full refund can be expected less the admin fee of \$1,250 per room.

***PLEASE NOTE:** To protect your investment we strongly recommend that you purchase travel insurance which gives full cancellation cover which we can assist you with.

If you have any questions, please contact Jay directly at:

jay@bhconferencing.com
+1 302 766 7647 or +351 912 991 460

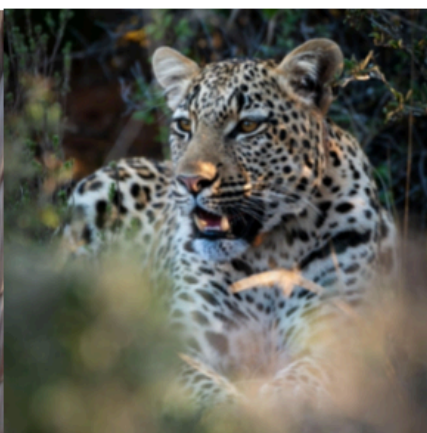
Jay Duncanson & Samantha Wyatt,
Adventure Conference Specialists

BlueHorizonConferencing.com



Booking Payment Instalment Schedule:

1. 30% deposit payment due at time of booking.
2. 40% 2nd instalment due mid January 31, 2025
3. 30% final payment due mid June 15, 2025



Contact: Jay Duncanson
+1 302 766 7647 | +351 912 991 460
jay@bhconferencing.com


Blue Horizon
CONFERENCING

Your Adventure Conference Specialists

bluehorizonconferencing.com

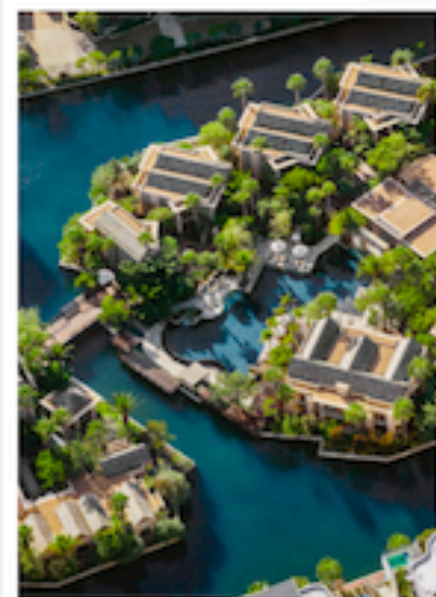
One&Only

CAPE TOWN
South Africa



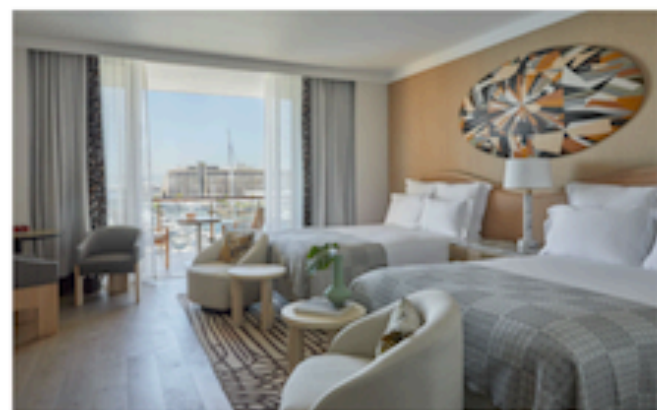
IN THE HEART OF CAPE TOWN

Situated in the heart of Cape Town, at the fashionable V&A Waterfront overlooking the marina and with panoramic views across to Table Mountain, One&Only Cape Town is a tranquil enclave on the doorstep of the vibrant city.



MARINA TABLE MOUNTAIN ROOM

1 King / 2 Queen Beds, 63sqm/678sqft Mountain view w/ balcony



MARINA HARBOUR ROOM

1 King / 2 Queen Beds, 63sqm/678sqft Harbour view w/ balcony

Contact: Jay Duncanson
+1 302 766 7647 | +351 912 991 460
jay@bhconferencing.com


Blue Horizon
CONFERENCING

Your Adventure Conference Specialists

bluehorizonconferencing.com



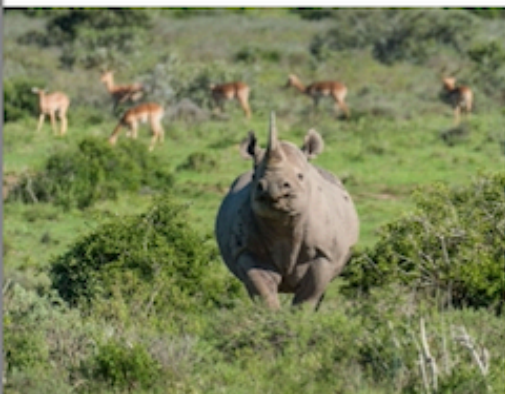
Pride of the Eastern Cape

Shamwari, meaning “my friend” in Shona, is the pinnacle of private game reserves and home to the coveted Big 5. Stretching over a vast, malaria free landscape, it offers an award-winning nature experience and is one of the largest private conservation initiatives in Southern Africa.

Shamwari is a place where guests can exist in harmony with nature, however fleeting the moment, where wildlife roam the landscape under the relentless African sun. Shamwari incorporates seven lodges and one explorer camp; each one unique in its own essence. Lodges are designed in harmony with their surroundings where guests can experience nature in sublime comfort.

Conserving a Vanishing Way of Life

- World's Leading Safari and Game Reserve and the World's Leading Conservation Company since 1998
- Environmental Award from American Society and Travel Agents
- One of the largest private game reserves in the Eastern Cape and one of the largest private conservation initiatives in Southern Africa
- One of the largest concentration of wildlife in the Eastern and Southern Cape
- A premier Big 5 safari which is private and exclusive to Shamwari guests
- Five of South Africa's seven biomes occur on Shamwari Private Game Reserve
- Dedicated Wildlife Department with a qualified wildlife veterinarian, ecologist, and environmentalist, along with a Wildlife Rehabilitation Centre and an Anti-Poaching Unit
- Shamwari has received the Global Nature Fund Award for Best Conservation Practice
- Unique safari-based activities to allow for a complete 5-star and tailor made experience
- Malaria Free
- Approximately 60 minutes' drive from Port Elizabeth Airport
- Natural extension of the famous Garden Route
- Ultimate family destination
- Unique activities aimed at children of all ages
- All food items are sourced in an environmentally responsible manner



Guest Activities

Game Drives

Interactive game drives, lasting up to 3 hours, take place in the tranquil moods of sunrise and sunset. Your game drives will take place in an open game viewing vehicle. You are encouraged to share any specific interests you may have with your ranger who will then try to incorporate these into your game drive. On game drives guests will enjoy a sundowner drink at sunset and coffee at sunrise. No persons under the age of 4 years are permitted to join game drives.

Guided Game Walks

Qualified walking guides provide the opportunity for guests to experience the excitement of approaching species on foot, as well as tracking, birding, insects, plant, and animal dropping identification. No persons under the age of 16 years are permitted to join the walking safaris. Persons 65 years and older need a medical certificate stating they are fit to participate, and we regret that no pregnant women are permitted on walks. Kindly ensure to request this activity at the time of bookings as this activity is subject to the availability of qualified guides.

Relaxation Retreats

Various treatments can be enjoyed at our Relaxation Retreats which are situated at Sindile, Eagles Crag, Bayethe, Lobengula and Long Lee Manor. Treatments can be booked at the time of booking your accommodation. Kindly visit our website for the latest list of treatments available.

Wildlife Rehabilitation Centre

The Shamwari Wildlife Rehabilitation Centre is amongst the best in Southern Africa and is fully registered to provide veterinary care to young, abandoned, orphaned, or injured wild animals. On arrival you will be met by a member of this caring team who will show you the facilities and explain what it is they do. During the recovery phase, "patients" are kept in custom built bomas. Provided there are animals in care, an opportunity to meet them could arise during your visit.

Born Free Foundation, Big Cat Rescue and Education Centre

In partnership with actress and wildlife campaigner, Virginia McKenna's Born Free Foundation, Shamwari Private Game Reserve designed the Big Cat Rescue and Education Centres. These incorporate a museum and educational facility with the goal to create awareness of the horrific way in which wildlife is exploited in captivity around the world. Over the years the Born Free Foundation has been able to rescue several big cats from impoverished situations. Born Free focuses on promoting the conservation of species and the protection of habitat whilst maintaining a humane and compassionate approach to the welfare of animals. The Born Free Foundation is a registered charity organization.



Thinking back on Shamwari, it provokes feelings of nostalgia. South Africa is a wonderful country with diverse wildlife and beauty in all its landscapes.

Visiting Shamwari makes one realize how blessed we are to be so close to nature and experience the beauty of wildlife.

Upon a morning game drive, wrapped in blankets shying away from the cold we saw the most amazing sighting of cheetahs in the mist. Cheetahs playing and chasing each other, giving us enough time to take memorable pictures. The most wonderful sighting making the cold and misty morning all worth it.

A quote I love living by especially when visiting Shamwari is : "Expect nothing, appreciate everything". Every moment in the bush is truly a magical moment.

LONG LEE MANOR

— SHAMWARI PRIVATE GAME RESERVE —

Gracious Living Inspired by Nature

Whether you're looking to plan your annual holiday or to accommodate business delegates, look no further than Long Lee Manor at Shamwari Private Game Reserve. This Edwardian style manor boasts manicured gardens, a large rim-flow pool, and verandas, all overlooking the magnificent plains teeming with wildlife.

Lodge Facilities

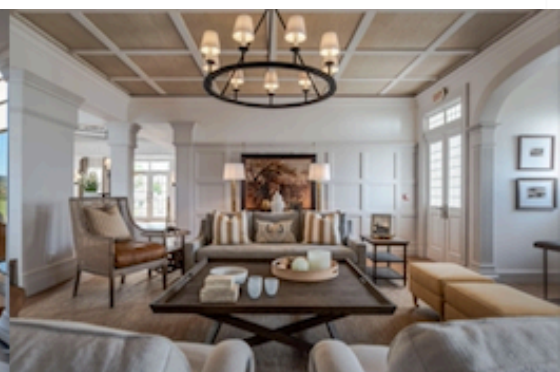
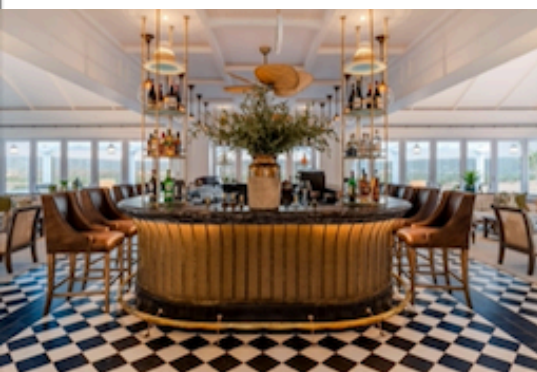
- Large rim-flow swimming pool
- Relaxation Retreat with three treatment rooms
- Fitness Centre
- Gift Boutique
- Perimeter electric fence
- In and outdoor dining facilities
- WIFI connection
- Manicured gardens
- Boma overlooking the waterhole

Room Features

- Air conditioning
- Nespresso Coffee Machine
- International Dial Telephone
- Fitted International Adapters
- Private Minibar
- Hairdryer
- Electronic Safe
- En-suite bathroom with bath and shower
- Television with selected satellite channels
- Veranda or balcony
- WIFI connection

Room Configuration

- 1 x Family Suite with 2 bedrooms, a living room and private plunge pool (sleeps maximum 4 adults and 2 children aged 8-11)
- 2 x Manor House Suites with balcony
- 11 x Plains Rooms with veranda and outdoor shower (2 inter-leading of which one is equipped to accommodate a wheelchair)
- 4 x Garden Rooms with veranda (inter-leading)



SINDILE

— SHAMWARI PRIVATE —
GAME RESERVE

Tranquillity Inspired by Nature

Named for the matriarch of Shamwari's leopards, the camp mimics a solitary leopard's sanctuary, blending with the surrounding bush while providing excellent vantages over the Bushman's River and surrounding plains.

Sindile is isiXhosa for "survivor", testament to the celebrated leopardess that survived numerous lion mauling's to raise five litters of cubs.

The nine premier guest tents are elevated above the surrounding bush, allowing uninhibited views, unsullied by any other man-made structures or light pollution.

The main lodge is made up of large, staggered tents, joined by decks and elevated walkways.

Lodge Facilities

- Reception and Lounge
- Gift Boutique
- Dining room with fireplace
- Bar & lounge with fireplace and big screen TV
- Viewing deck with firepit
- Boma
- Relaxation Bush Retreat
- WiFi connection

Room Features

- Air conditioning
- Nespresso Coffee Machine
- International Dial Telephone
- Fitted International Adapters
- Minibar
- Hairdryer
- Electronic Safe
- En-suite bathroom with bath and shower
- Outdoor shower
- Private deck with heated plunge pool
- Indoor fireplace
- Lounge and Dining area

Room Configuration

- 9 x Premier Tented Suites





Long Lee Manor Suite

Uninterrupted Views Private Balcony

There are two elegant suites in the historic manor house, dating back to 1910. The suites exude luxury and have balconies overlooking the stupendous rim-flow pool and impressive waterhole.

Regrettably no children under the age of 6 years

US \$8,885 pp

**This is a 2 Bedroom Suite, pricing is based on 4 persons sharing*



Long Lee Manor Plains Room

Outdoor Shower Experience Uninterrupted Views Private Verandah

The plains rooms overlook the Shamwari plains, providing a magnificent view for guests. The rooms each have an outdoor shower, for those wanting a more wilderness experience.

Regrettably no children under the age of 6 years

US \$8,885 pp

**Pricing is based on double occupancy / 2 persons sharing*



Long Lee Manor Garden Room

Private Verandah Interleaving Rooms Uninterrupted Views

The Garden Rooms overlook the beautiful manicured gardens and have private verandahs, showcase gorgeous views of the surrounding plains. The rooms are conveniently interleaving, catering to families.

Regrettably no children under the age of 6 years

US \$8,885 pp

**Pricing is based on double occupancy / 2 persons sharing*



Sindile Premier Tented Suite

Private Plunge Pool Outdoor Shower Experience Uninterrupted Views

Named after the matriarch of Shamwari' leopards, set in deep bush, on a ridge, providing excellent vantages the Bushman's River and surrounding plains. The nine luxury free-standing tents are elevated above the surrounding bush, allowing uninhibited views, unsullied by any other man-made structures or light pollution harmonious, intimate design minimises the environmental footprint.

****There are only 9 Luxury Tents available to book**

US \$9,435 pp

**Pricing is based on double occupancy / 2 persons sharing*

